

WEB600

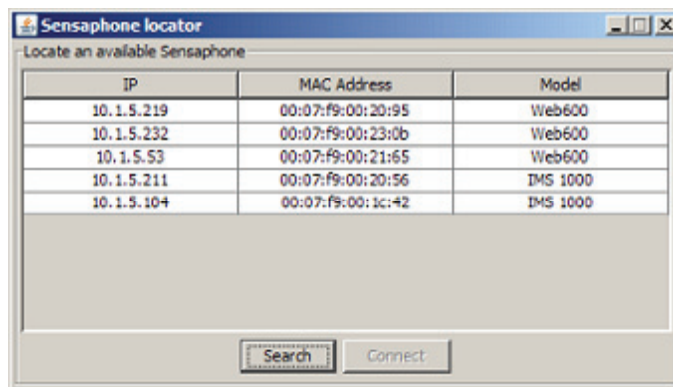
QUICK INSTALLATION GUIDE

NETWORK CONFIGURATION: AUTOMATIC

The Web600's default configuration allows it to obtain an IP Address automatically if your network supports DHCP. If your network is not configured for DHCP support, please see the reverse side.

To setup your Sensaphone Web 600 using DHCP, follow these simple steps:

1. Using the supplied network cable, plug one end into the Ethernet port on your Web600 and the other end into your network device (i.e. hub, switch, router, modem, etc)
2. Power on the Web600.
3. There may be a short delay (1-2 minutes) when starting up of your Web 600. When the lights on the network port light up, the startup sequence has been completed.
4. Install the Sensaphone Locator application found on the CD (locator_install.exe) included with this product, or from the Sensaphone website (<http://www.sensaphone.com>)
 - For instructions on installing the Sensaphone Locator application, please view the Web600 User's Manual on the CD or visit the Sensaphone website listed above.
5. Run the Sensaphone Locator application by double-clicking the Sensaphone Locator icon on your desktop, or selecting Start -> Programs -> Sensaphone Locator -> Sensaphone Locator.
6. The Sensaphone Locator application will display a screen similar to the one below:



Pressing the 'Search' button will rescan your network for any Sensaphone devices that may be connected. Your specific device can be identified by using the MAC Address field of the Sensaphone Locator, which will be identical to your serial number.

7. Click on your device within the Sensaphone Locator application and click the 'Connect' button. Your web browser will launch, taking you to the Web600's homepage.
8. Your Web 600 is now ready for use. Please consult the User Manual for further configuration options.

NETWORK CONFIGURATION: STATIC

The Web 600's default configuration will configure a static IP address of 192.168.1.250 if a DHCP server is not located on your network. If your network is configured for DHCP support, please see the reverse side.

To setup your Sensaphone Web 600 without DHCP, follow these simple steps:

1. Using a cross-over cable (not supplied), plug one end into the Ethernet port on your Web 600, and the other end into your computer's network card.
2. Power on the Web 600.
3. There may be a short delay (1-2 minutes) when starting up of your Web 600. When the lights on the network port light up, the startup sequence has been completed.
4. Open the web browser on your desktop computer and navigate to <http://192.168.1.250/>. Your web browser should now display the Web 600's Homepage.
5. Your Web 600 is now ready for use. Please consult the User Manual for further configuration options.